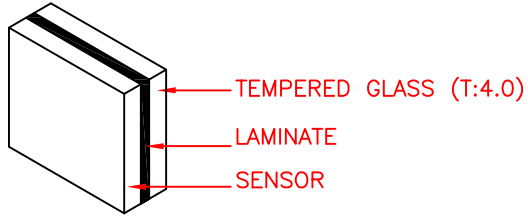
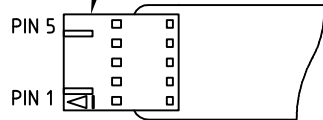


OA DIAGONAL : 586.37 [23.09"] (REF)
 VA DIAGONAL : 569.26 [22.41"] (REF)
 PA DIAGONAL : 535.10 [21.07"] (REF)

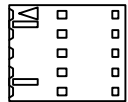


LAY UP

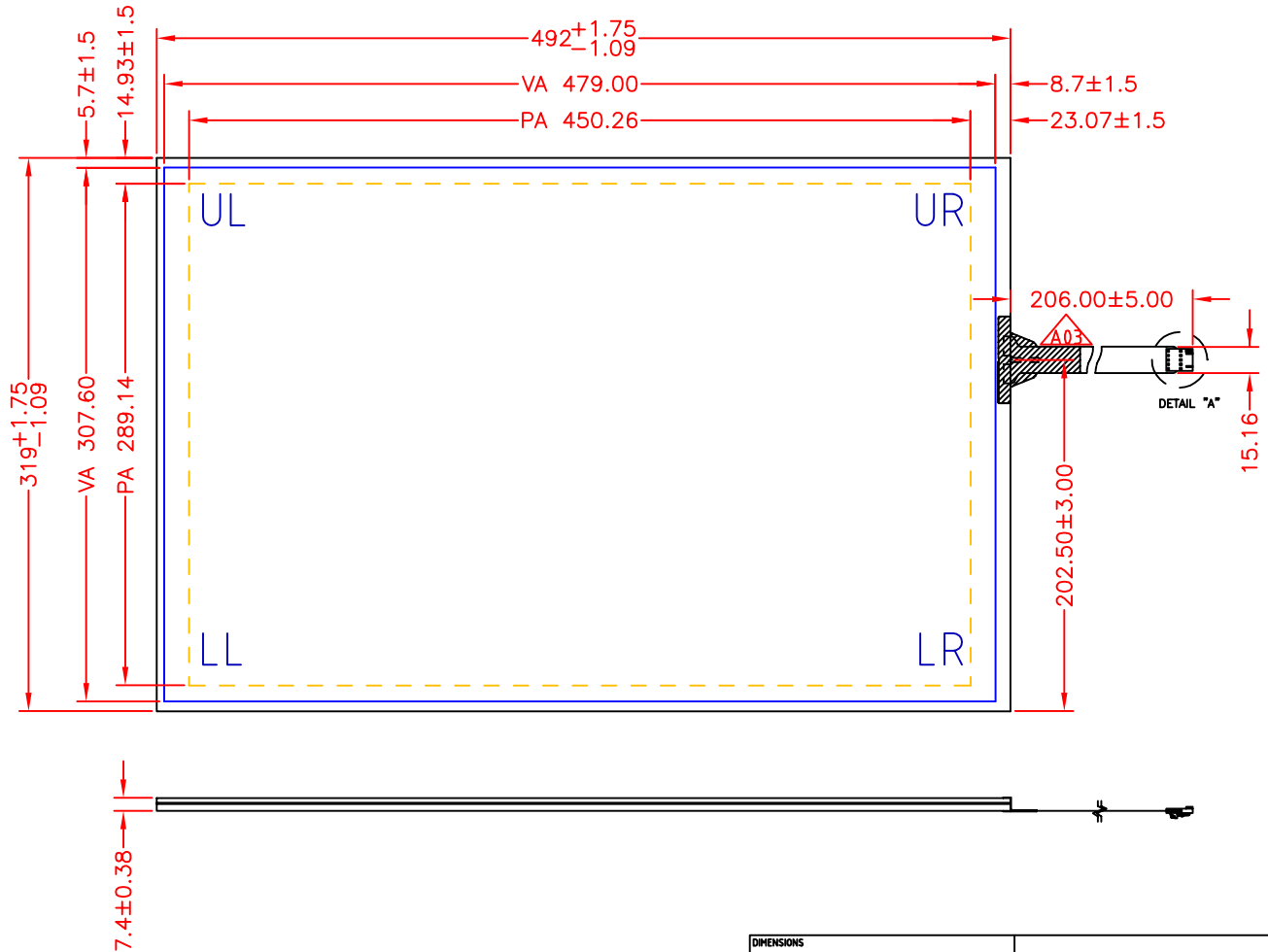
CONNECTOR HOUSING
 Molex #015-38-8050
 OR EQUIV



DETAIL "A"
 NOT TO SCALE



替代用Housing



PIN OUT	
1	UL
2	UR
3	NC
4	LR
5	LL

- NOTES :
1. Tail type : FPC
 2. 20130115 Modify Tail assembly and Housing name
 3. A03: Eliminate pin 3 and update Mylar tape shape, etc.

DIMENSIONS		MM		Dano 達諾光電股份有限公司	
TOLERANCES UNLESS OTHERWISE SPECIFIED		TITLE		NOTICE OF PROPRIETARY RIGHTS	
.X	±	Capacitive Touch Sensor		The document is proprietary property of DanoTech Corp.Ltd.and may not be reproduced or distributed without Danotech authorization.	
.XX	±0.38	492.00 x 319.00 x 7.40			
.XXX	±0.76				
ANGLES	±1°				
THIRD ANGLE PROJECTION		P/N		DRAWN BY	
		W1-22447APA-GL		YC	
DO NOT SCALE DRAWING		REV.		DRAWN DATE	
SCALE 1:1		A-03		2014-05-16	
		SHEET			
		1 of 1			

REV	CHANGE NOTICE	DATE	DRW
A-03	Eliminate pin 3 and update Mylar tape shape, etc.	2014-05-16	YC
A-02	Modify Tail assembly and Housing name	2013-01-15	YC
A-01	INITIAL RELEASE	2010-05-11	HY